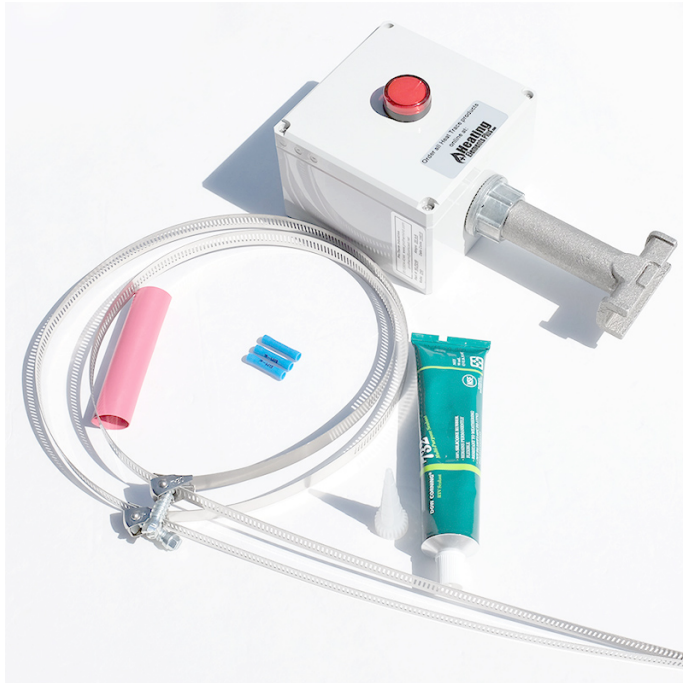


MLP Series Monitor Light (Ordinary Locations)



Large Pipe Straps (2) Fits up to 6" Outside Diameter Pipes
 Polycarbonate Junction Box (5" x 5" x 3")
 22mm Super-Bright LED Light
 5" High Standoff Pipe
 Butt Connectors (3)
 Ground Screw
 4" of .5" Diameter Heat Shrink

DESCRIPTION

The Pro-Therm MLP Series monitor light provides a means for end of line continuity monitoring of field terminated self-regulating and constant wattage cables.

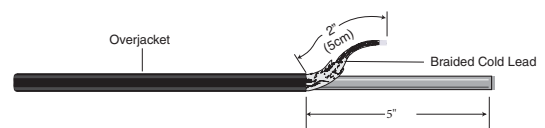
The MLP is supplied with a stand-off and all necessary components to install the unit onto a pipe quickly & easily.

MLP FEATURES

- NEMA 4X Enclosure
- High UV Resistant Polycarbonate
- 5" x 5" x 3" Enclosure Provides Room To Make Connections
- 22mm Super-Bright LED Illumination
- Vibration Resistant
- Eliminates Lamp Failure Due To Fragile Lamp Filaments
- Large Viewing Angle
- Suitable For Wet Locations
- 120, 208, 240, Or 277 VAC Operation
- Light Intensity Comparable To Incandescent Lamps, And Far Superior To Neon Lamps

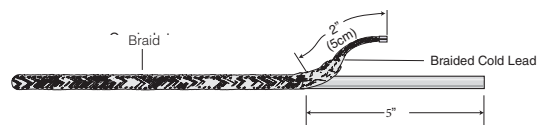
PREPARING CABLE FOR INSTALLATION

1. **SELF-REGULATING CABLE:** Remove 5" of overjacket. Remove 3" of braid. Unbraid and twist remaining 2" of braid and crimp to provided ground wire.

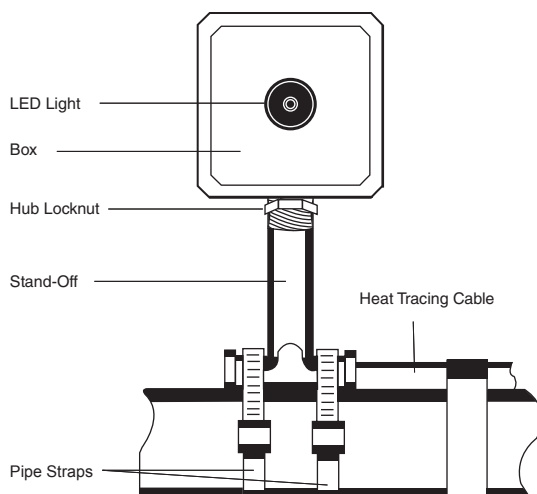


Detail 1. Self-regulating cable preparation.

2. **CONSTANT WATT CABLE:** Remove 5" of braid, and unbraid and twist 2" of braid and crimp on provided ground wire.



Detail 2. Constant watt cable preparation.

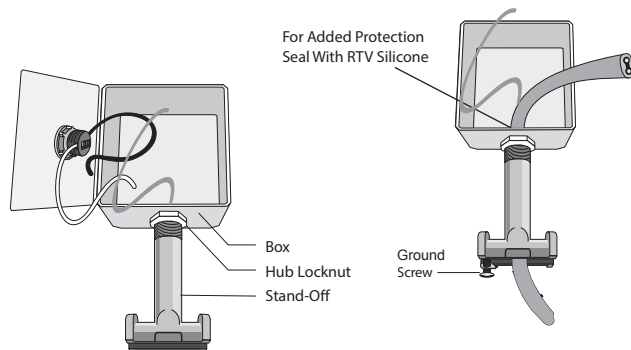


INSTALLING THE MLP MONITOR LIGHT

1. Push cable through standoff and into the box. Refer to Detail 4.
2. Set the assembly on pipe and fasten with wire ties. Refer to Detail 5.
3. Slide the large 4" heat shrink sleeve over the bus wires and insulated jacket. Refer to Details 6/7.
DO NOT heat shrink at this time.
4. For **SELF-REGULATING CABLE**. Remove 2" of insulating jacket. Split approximately 2" of the center matrix on self-regulating cable. Refer to Detail 6. Strip bus wires and MLP's black and white wires at least .25". Refer to Detail 6. Strip .25" of the conductive core to expose the leads to the heater.

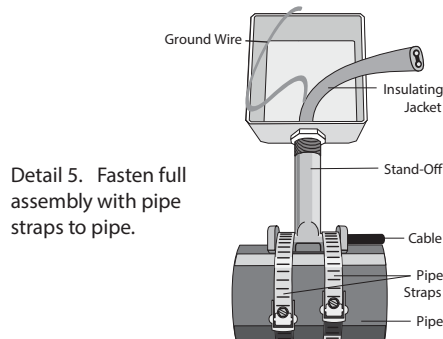
For **CONSTANT WATT CABLE**. Remove 2" of insulating jacket to expose insulated bus wire, and remove thin spiralled nichrome wire. Tuck nichrome wire end under jacket. Split approximately 2" of insulated bus wire. Strip at least .25" of each wire. Refer to Detail 7.

5. Crimp one bus wire to the black monitor light wire and the other bus wire to the white monitor light wire using the insulated crimp connectors. Refer to Detail 8.
6. Position heat shrink sleeve over connectors, lead wires, insulating jacket and apply heat to shrink and seal. Refer to Detail 9.
7. Push wire into box and close the cover panel & Replace screws. Refer to Detail 10.

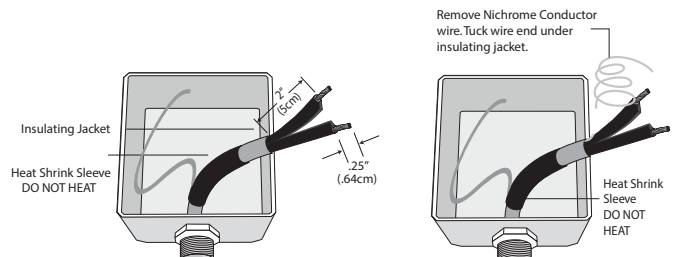


Detail 3. Screw box onto stand off. Remove MLP front.

Detail 4. Insert cable and ring terminal.



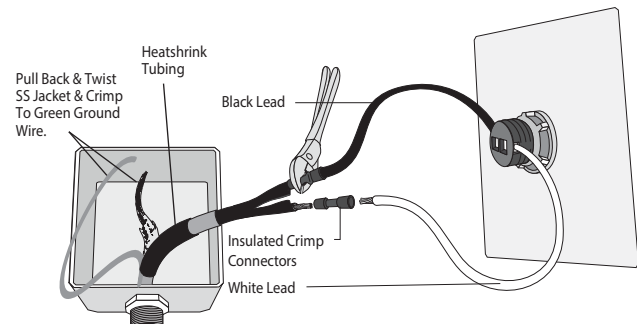
Detail 5. Fasten full assembly with pipe straps to pipe.



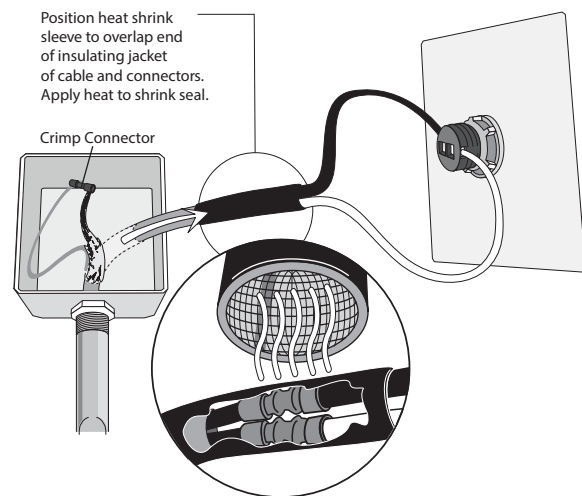
Detail 6. Self-regulating cable.

Detail 7. Constant watt cable.

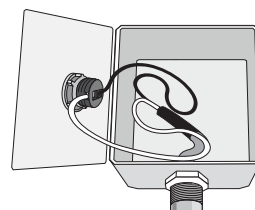
NOTE: Do not remove or replace white and/or black lead wires from LED light assembly.



Detail 8. Attach cable to LED light.



Detail 9. Position heat shrink sleeve and heat.



Detail 10. Finished assembly.

SALES & TECHNICAL SUPPORT

A full set of installation instructions are included with order. Please call 1-615-834-4044 with any questions.